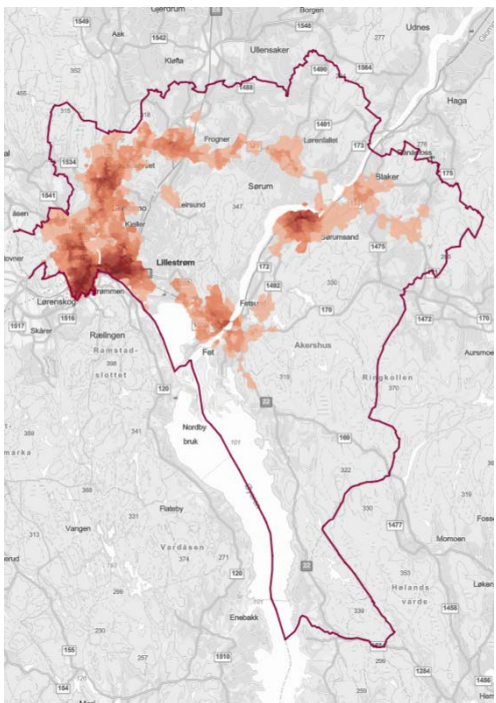


Analyser av tilgjengelighet og mål for reisevaner

Strategi for mobilitet i Lillestrøm kommune

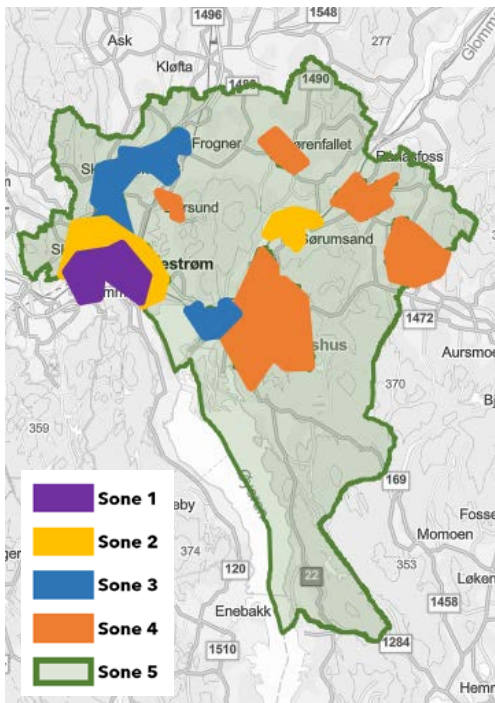
1

Analyser



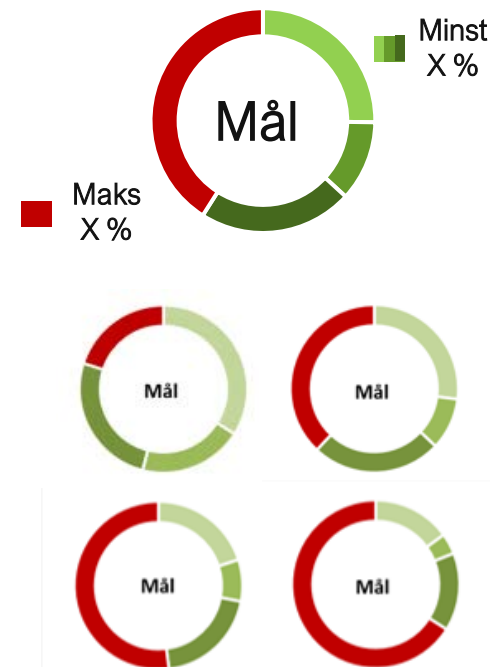
2

Soneinndeling



3

Transportmål



Analyser av tilgjengelighet

- 1.1 Kollektivtilbudet $a + b$
- 1.2 Lange reiser med sykkel
- 1.3 Tilbud i gangavstand $a + b + c + d + e$
- 1.4 Samlekart – alle analysene vektet
- 1.5 Sammenligning med reisevaner (transportmodell)

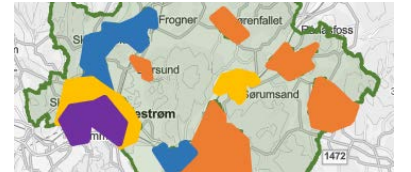
1

Analyser



2

Soneinndeling



3

Transportmål

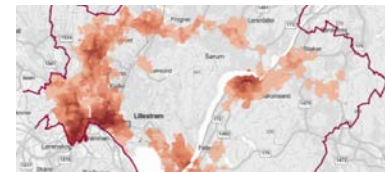


Analyser av tilgjengelighet

- 1.1 Kollektivtilbudet **a** b
- 1.2 Lange reiser med sykkel
- 1.3 Tilbud i gangavstand **a** b **c** d + e
- 1.4** Samlekart – alle analysene vektet
- 1.5** Sammenligning med reisevaner (transportmodell)

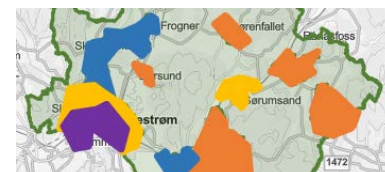
1

Analyser



2

Soneinndeling



3

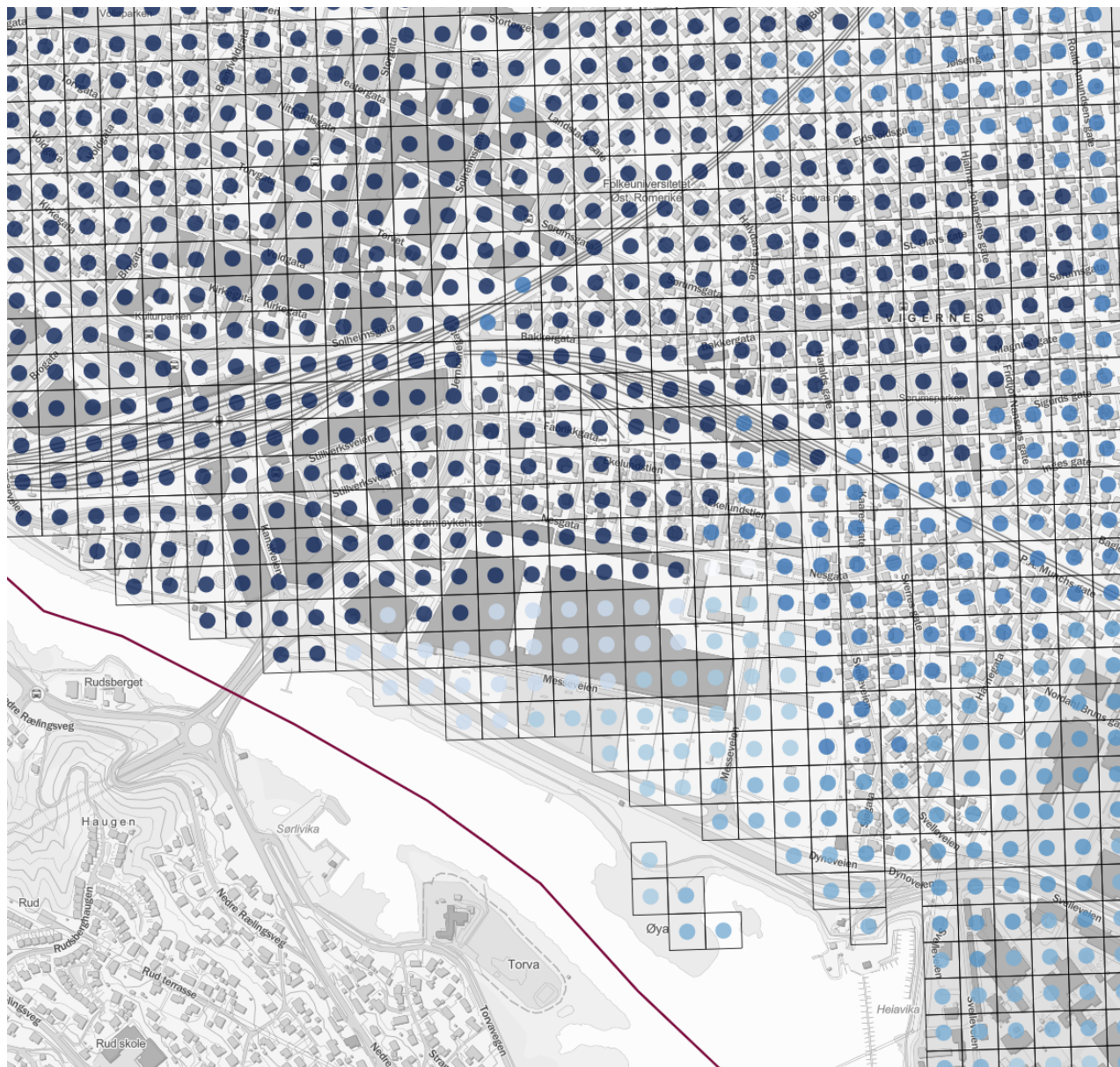
Transportmål



Metode

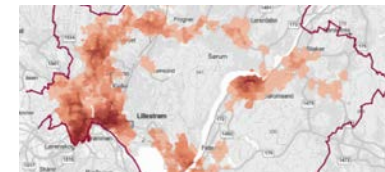
Kommunen er delt i
50 x 50 meter
= ca. 80 tusen grids

Alle analyser gir
hvert grid en unik
score



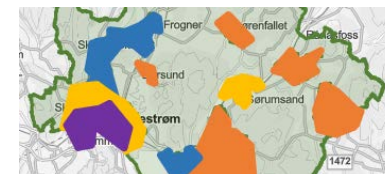
1

Analysar



2

Soneinndeling



3

Transportmål



Kollektivtilbudet

 Særdeles godt

 Svært godt

 Godt

 Litt over middels

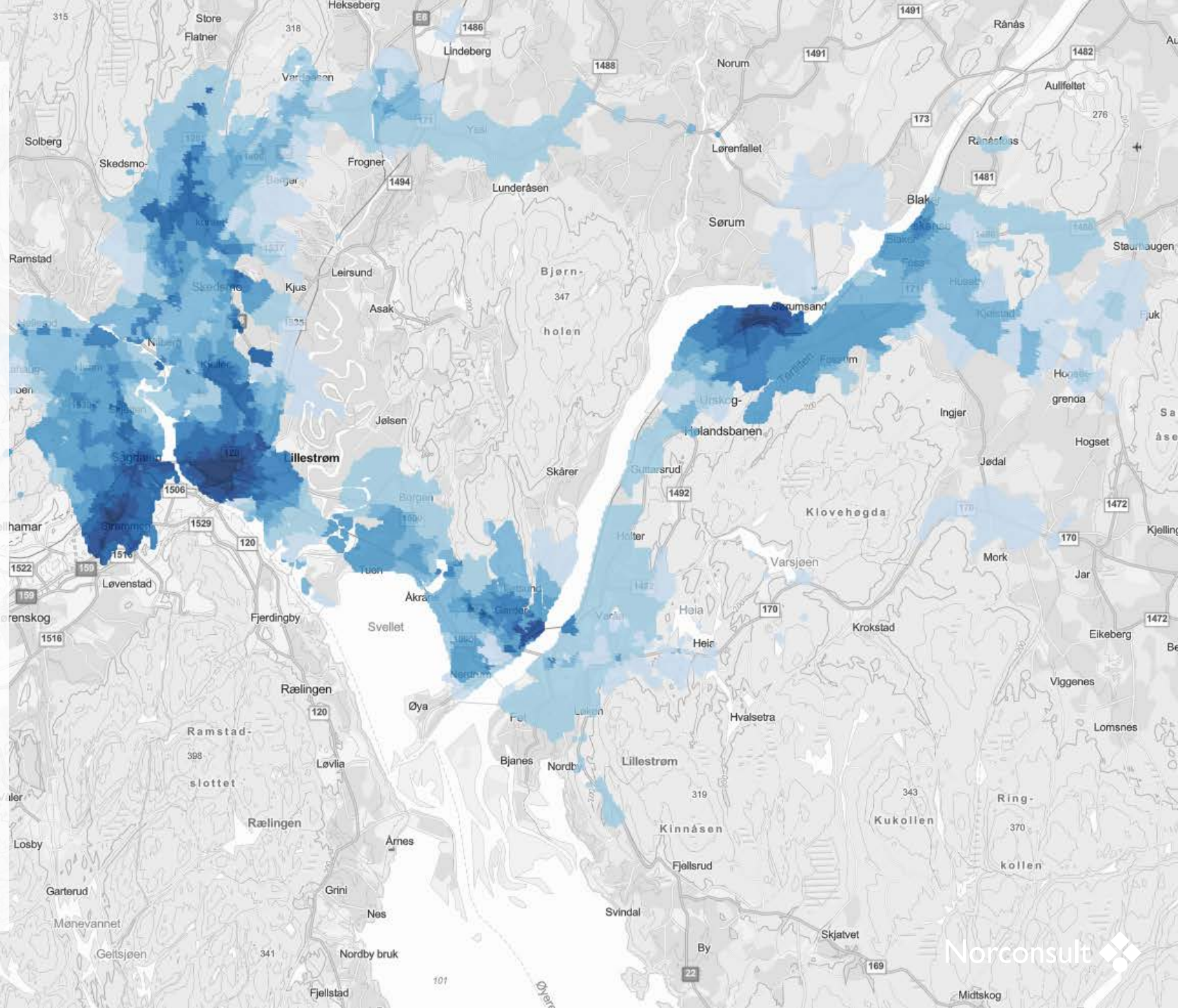
 Middels

 Litt under middels

 Dårlig

 Svært dårlig

Ingen farge
Særdeles dårlig



Kollektivtilbudet

1. Velge destinasjoner ★ (28)

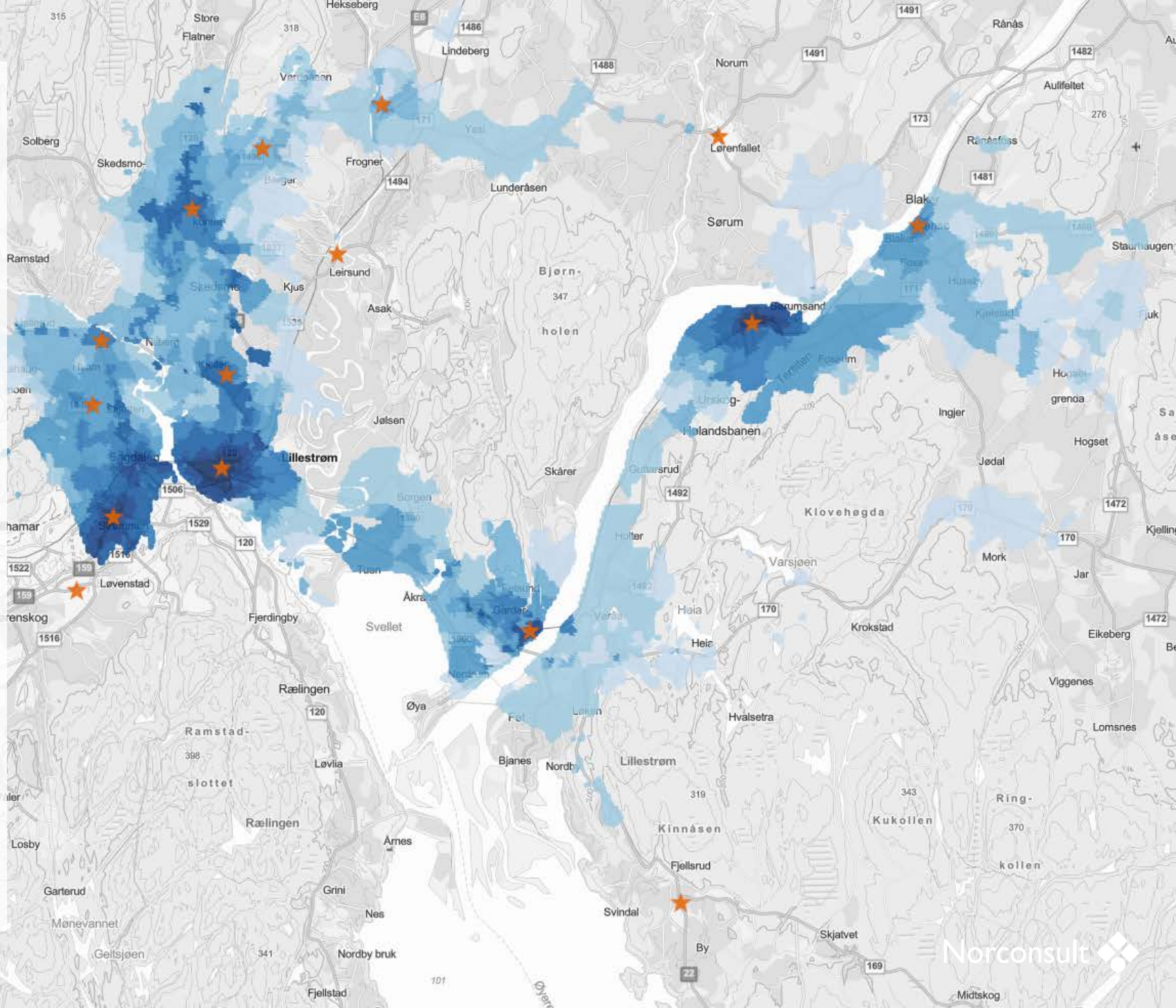
- ▶ Transportmodell RTM23+
- ▶ Sjekket mot bl.a. pendlerstrømmer (SSB), kommunens strategiske arealkart

2. Beregne reisetid

- ▶ GIS og EnTur-data
- ▶ 80 tusen grids x 28 destinasjoner = 22 mill. ulike reisetider

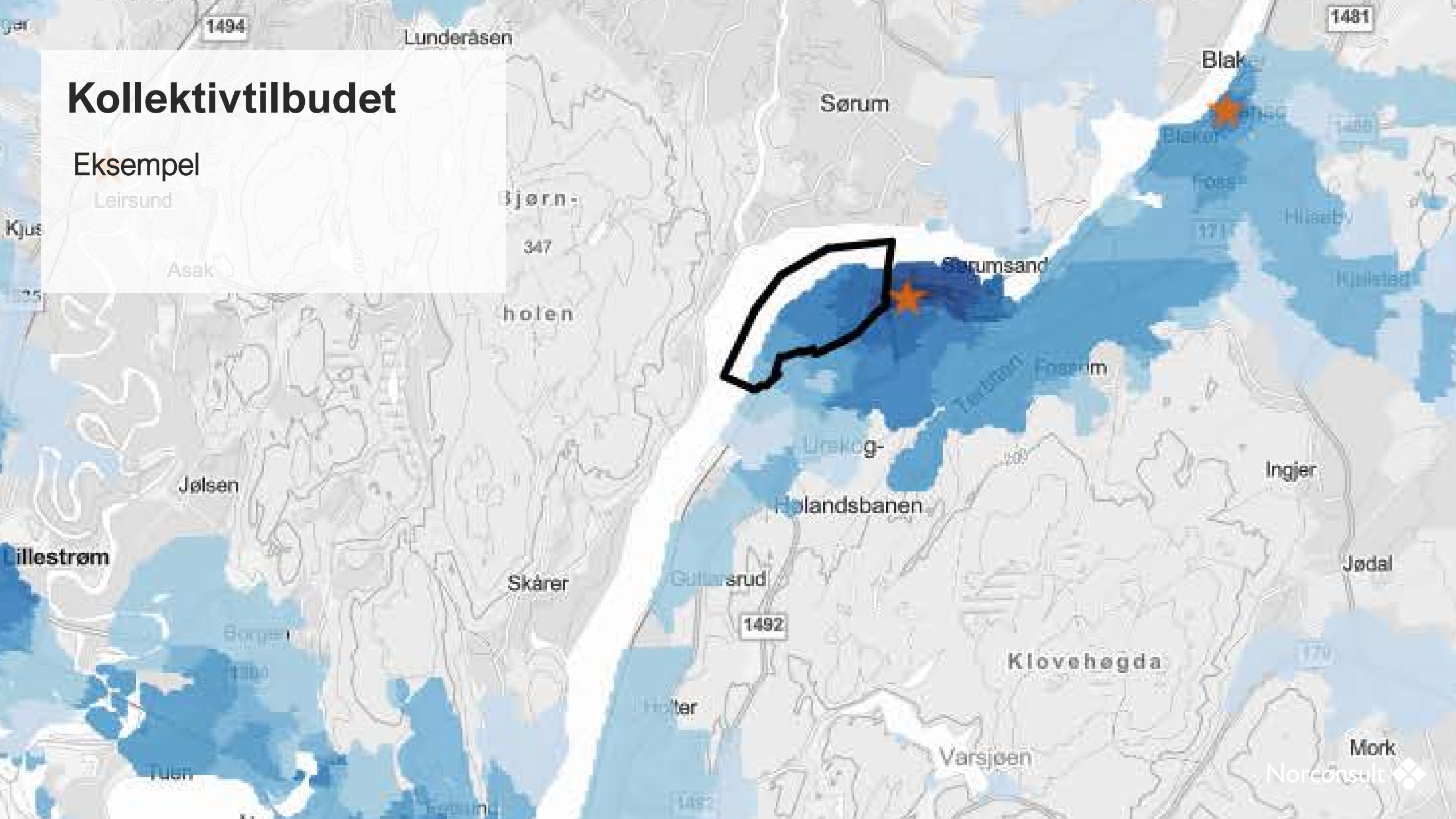
3. Vekting av destinasjonene

- ▶ Transportmodell RTM23+



Kollektivtilbudet

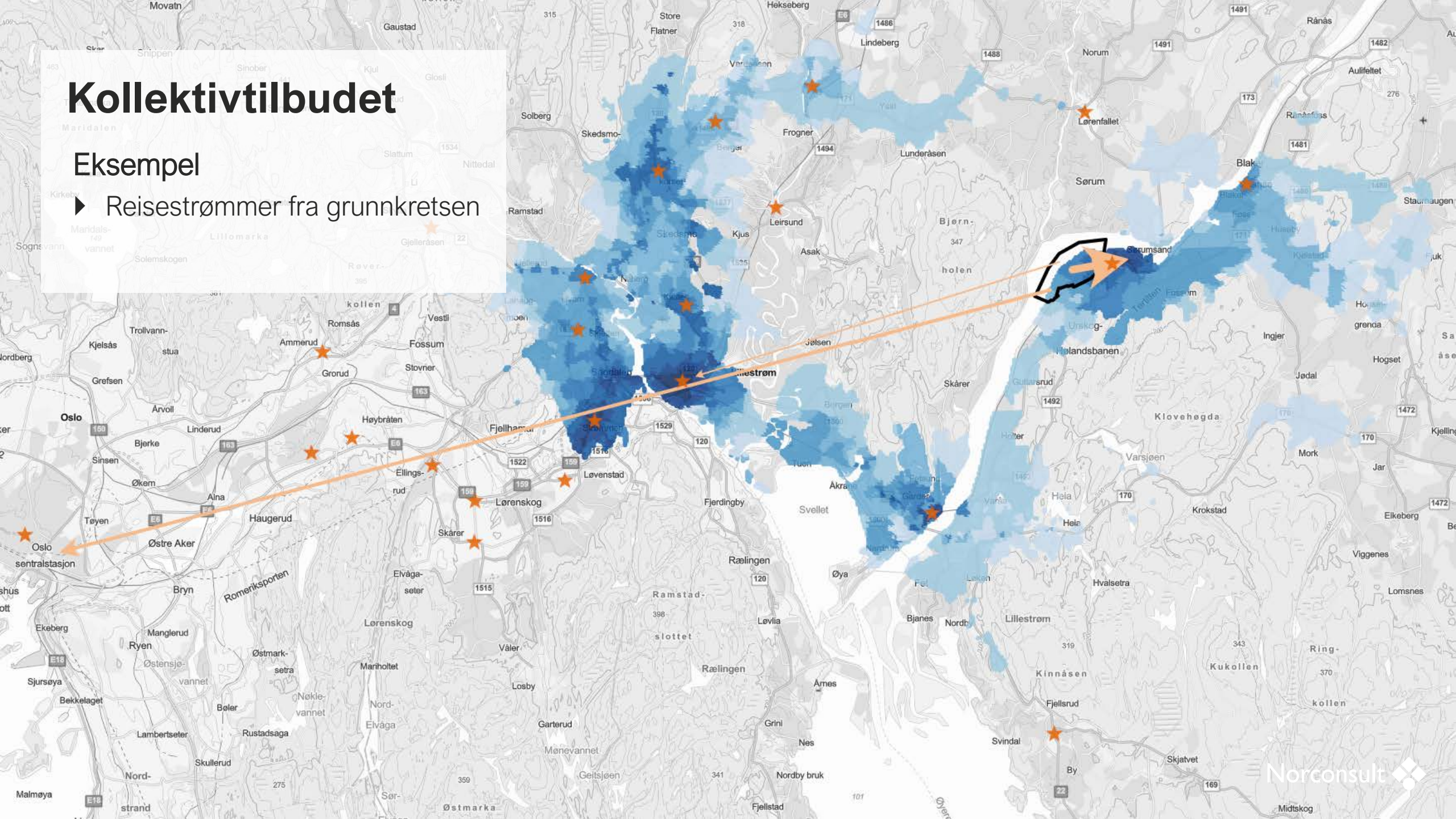
Eksempel



Kollektivtilbudet

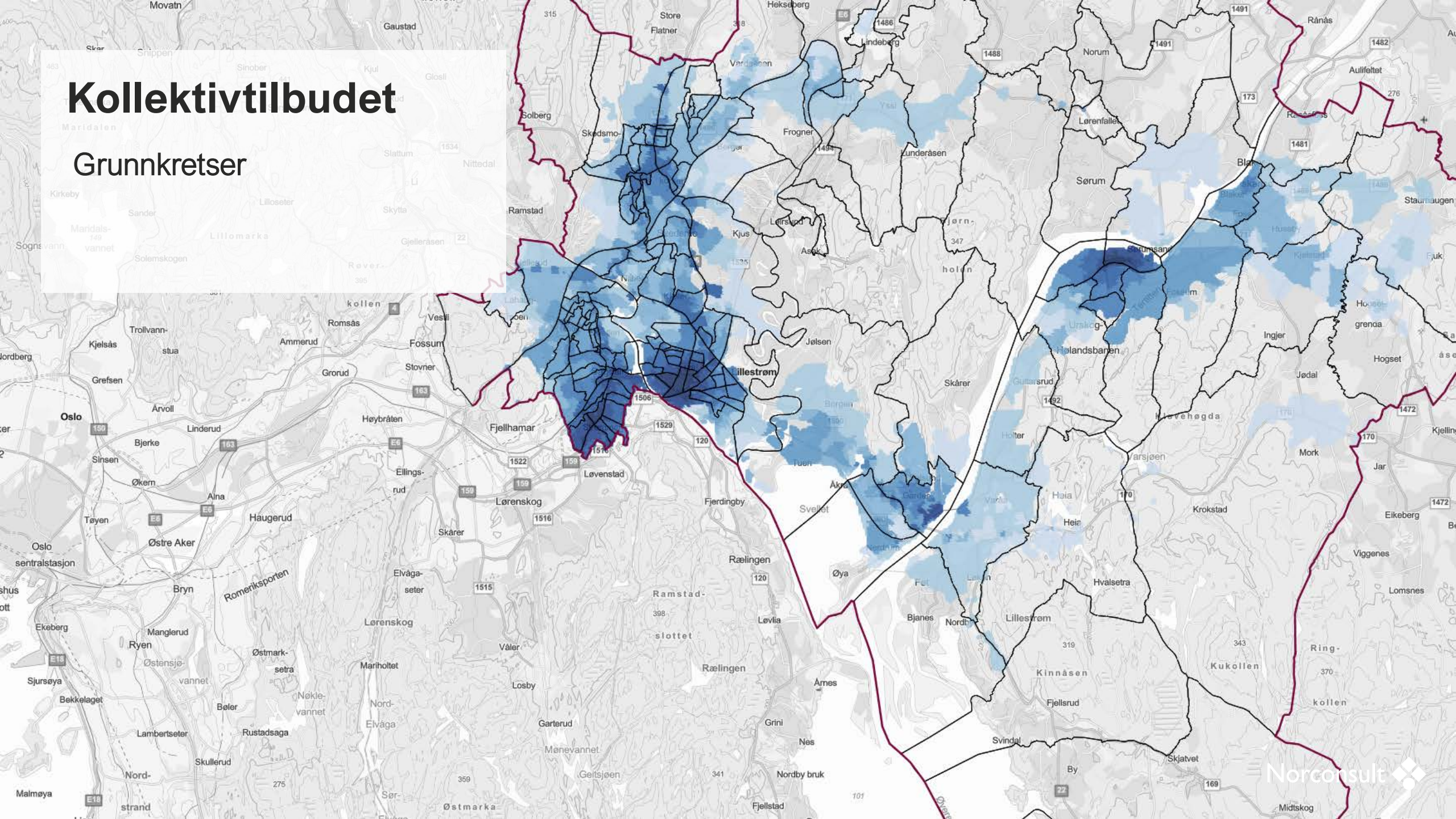
Eksempel

► Reisestrømmer fra grunnkretsen



Kollektivtilbudet

Grunnkretser



Tilbud i gangavstand

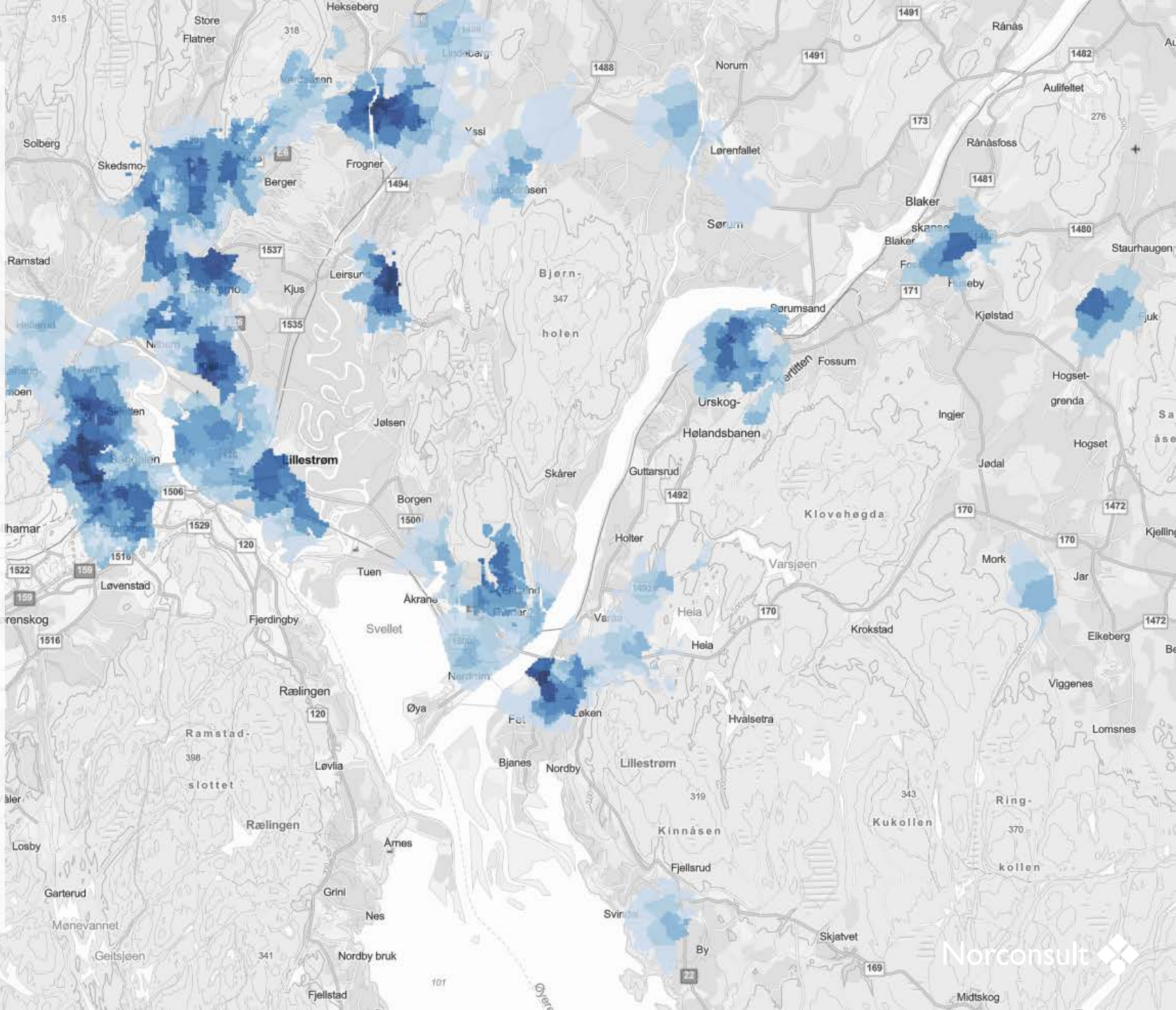
a Barnehage og grunnskole

Metode: Nærmeste tilbud

- Kun én av hver type tilbud
- Avstanden til nærmeste tilbud langs gangnett

Type tilbud (*vektning*)

- Barnehage (50 %)
- Barneskole (30 %)
- Ungdomsskole (20 %)



Tilbud i gangavstand

c Servering og kultur

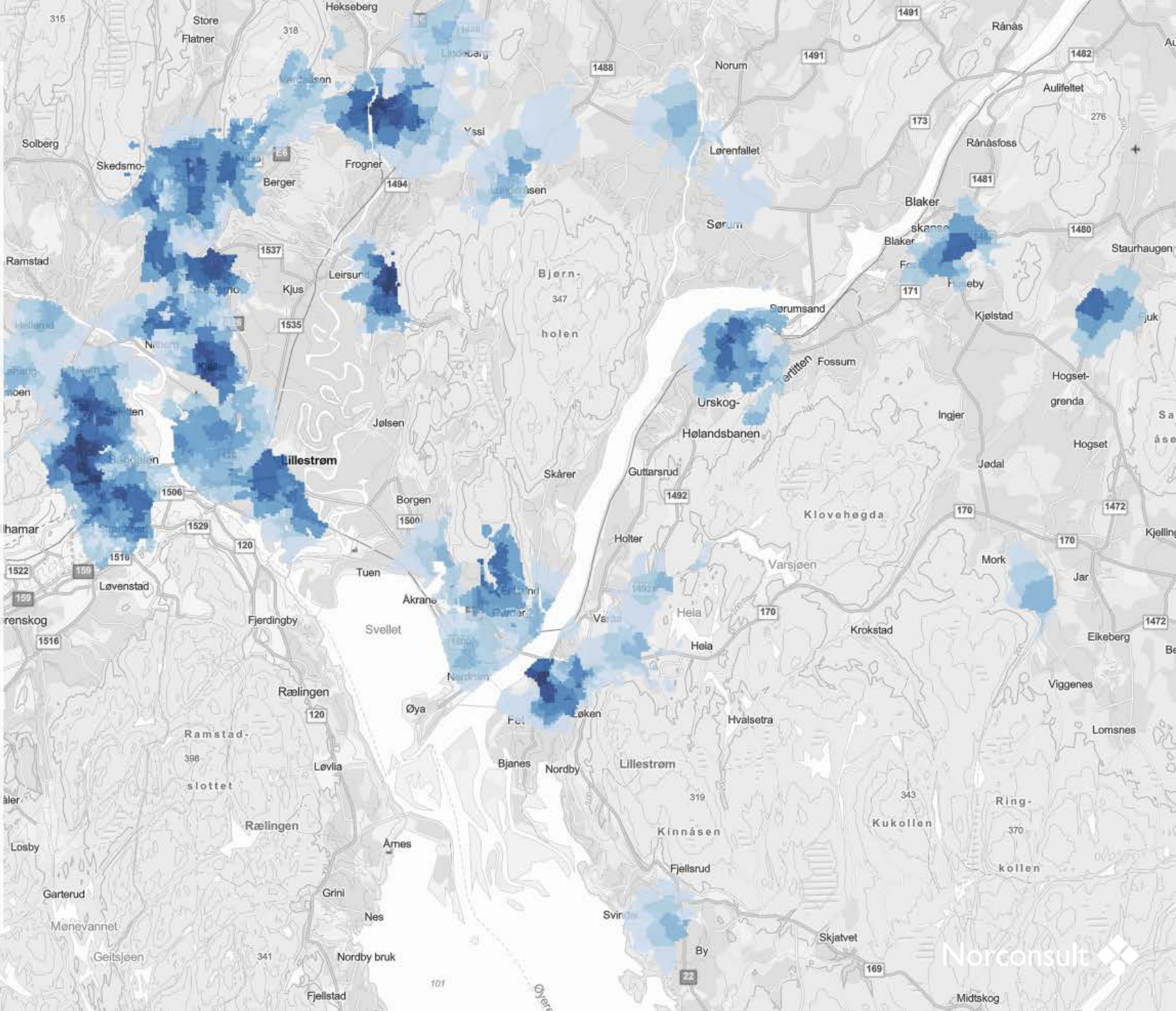
Metode: Tilbudsbredde

- Hvor mange tilbud av hver type finnes innenfor 15 minutter

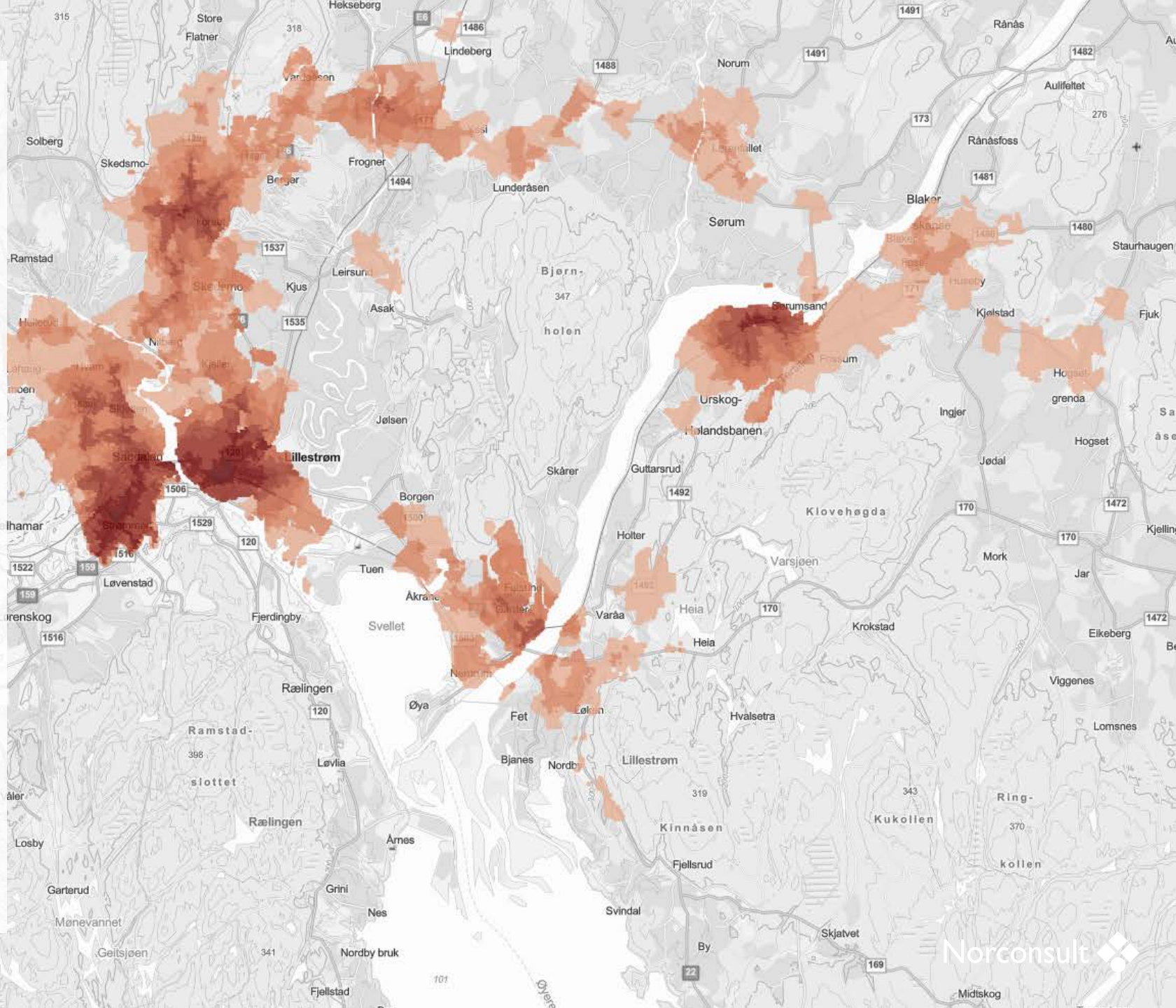
Type tilbud (*vektning*)

- Serveringstilbud (60 %)

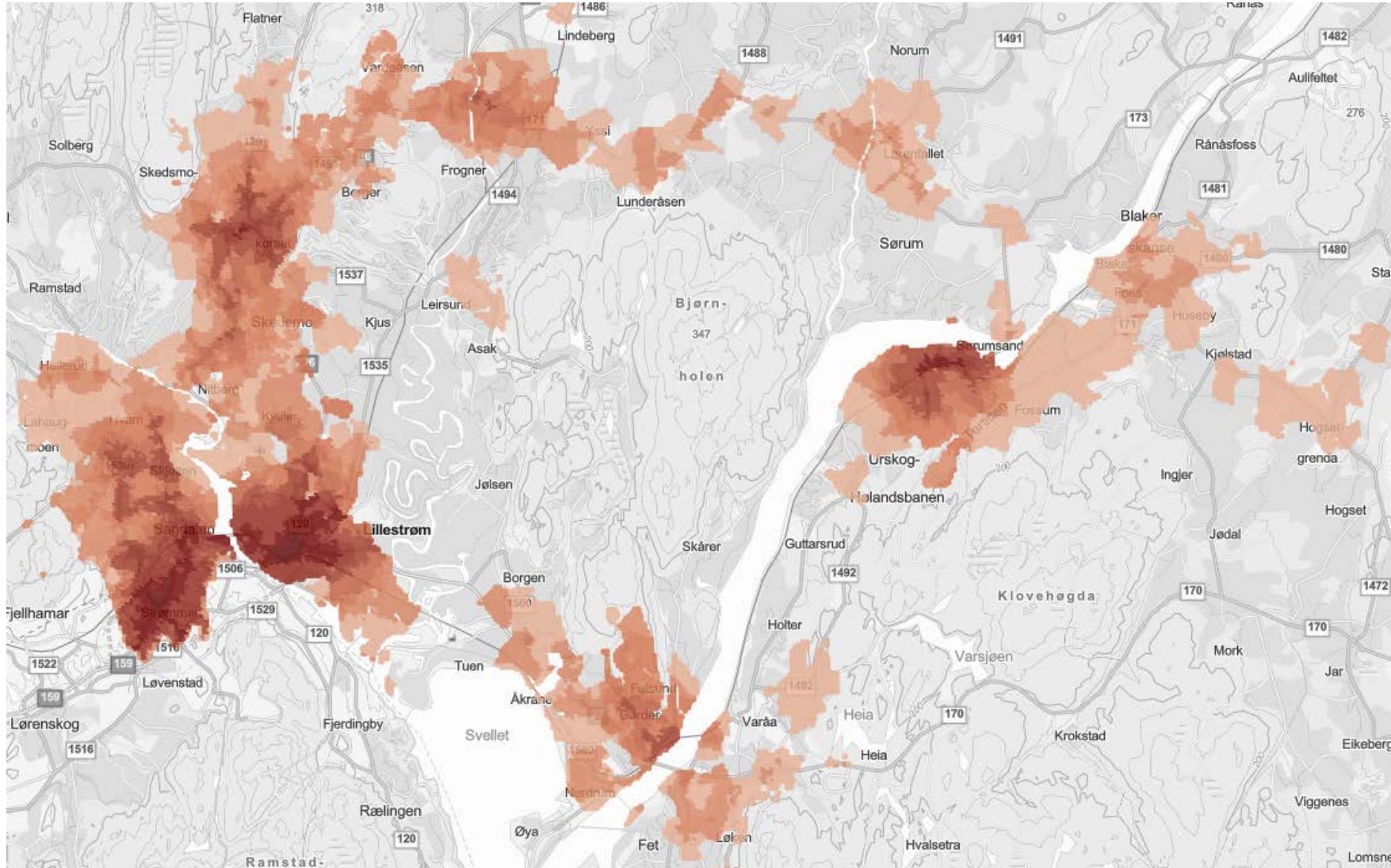
- Kulturtilbud (40 %)



Tilgjengelighet

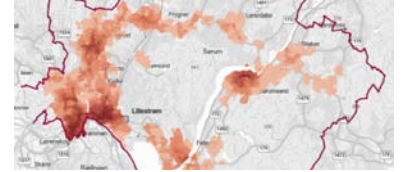


Samlekart – alle analysene vektet



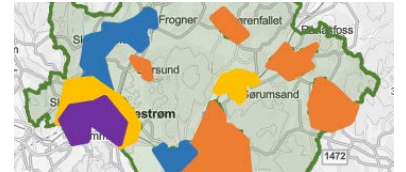
1

Analysar



2

Soneinndeling

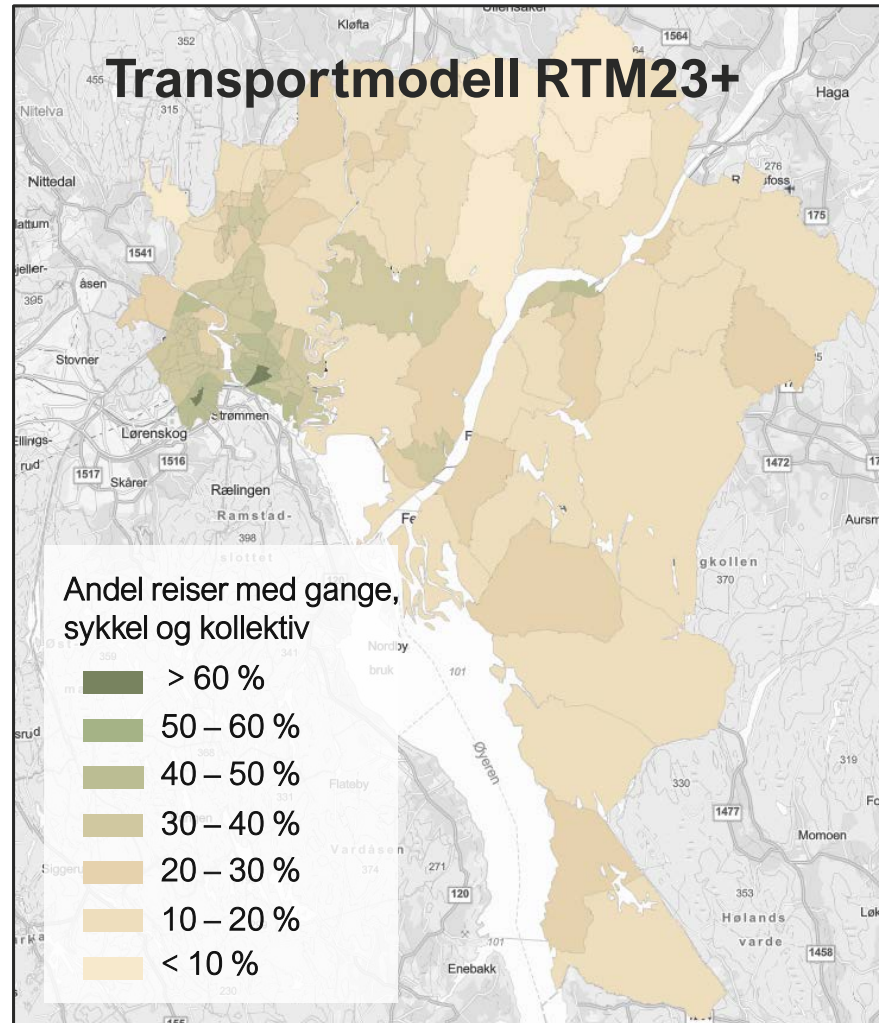
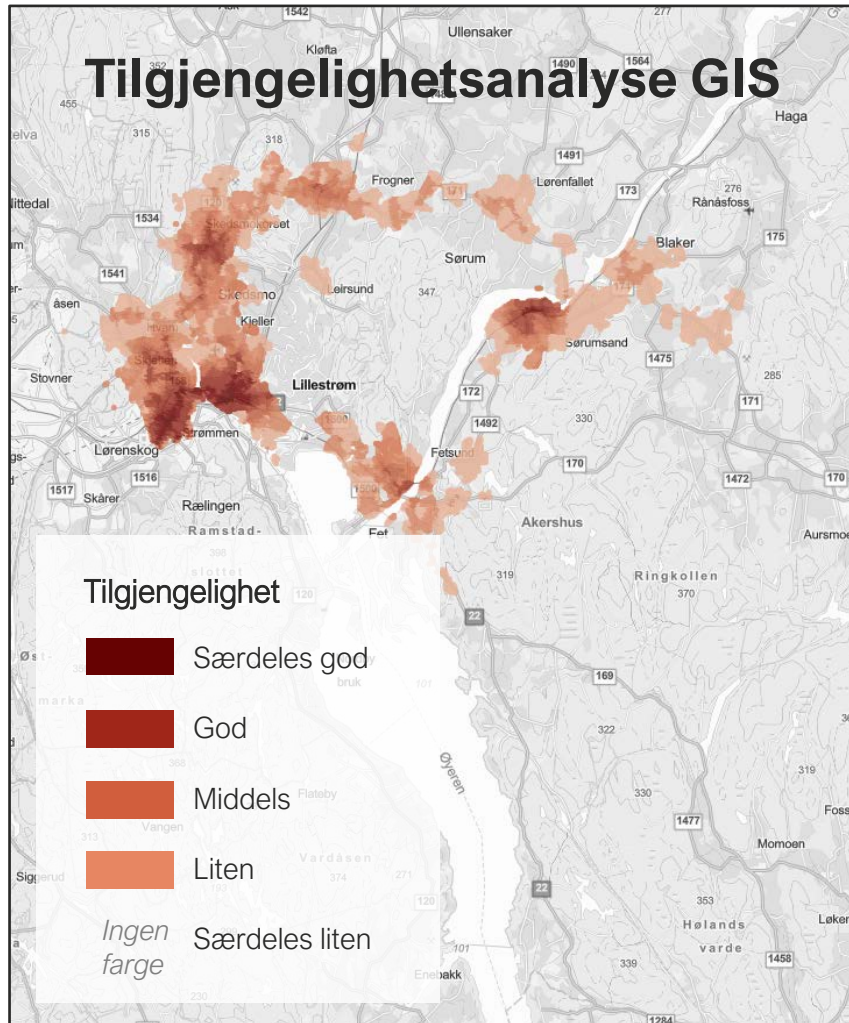


3

Transportmål

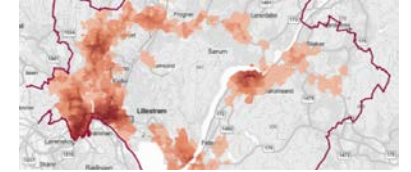


Sammenligning med reisevaner



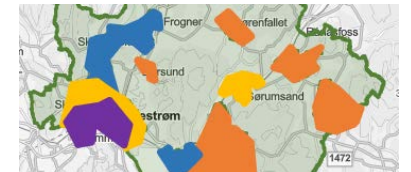
1

Analysér



2

Soneinndeling

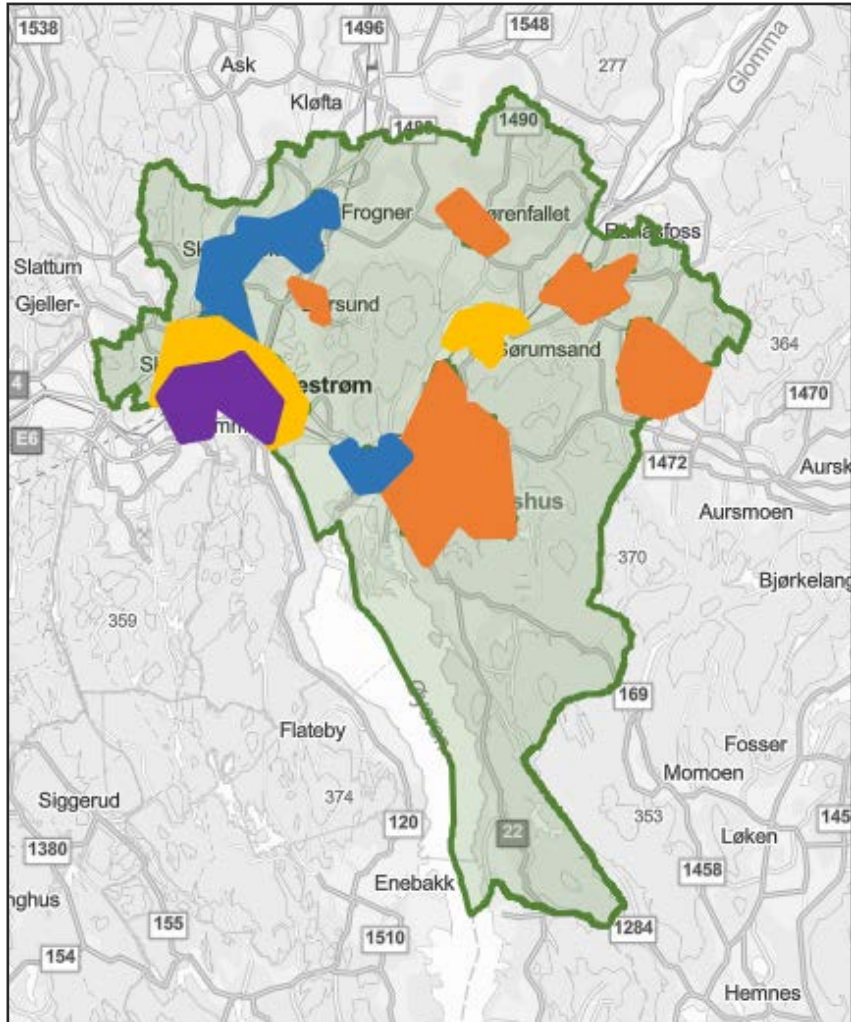


3

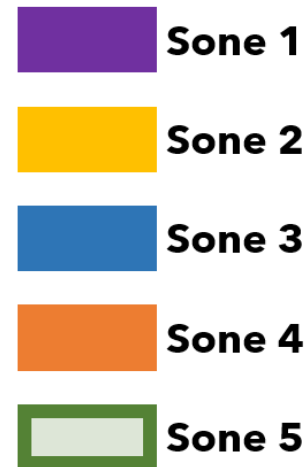
Transportmål



Soneinndeling

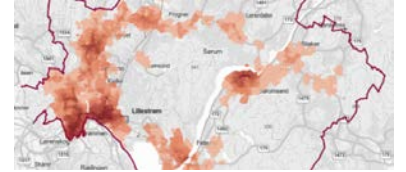


**Eksempel på
soneinndeling
– ikke endelig**



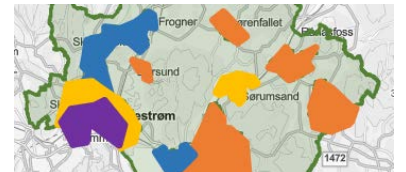
1

Analysér



2

Soneinndeling



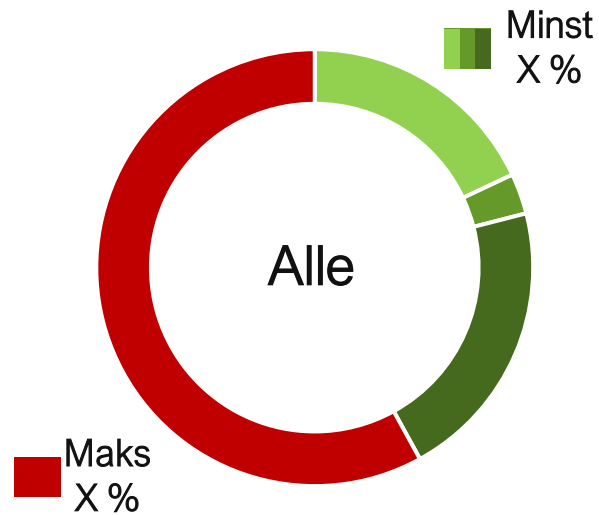
3

Transportmål



Transportmål for innbyggerne

Mål for hele kommunen



Mål for hver sone



Bil Gange Sykkel Kollektivtransport

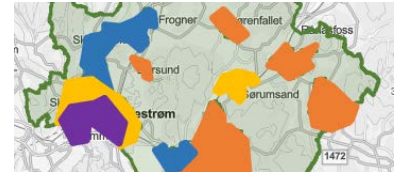
1

Analysér



2

Soneinndeling



3

Transportmål



marte.mariussen@norconsult.com

Norconsults nøkkelressurser



Marte Mariussen



Pablo Urzainqui



Celina Negro